

# EXIT

by **OMEGA**  
The Power To Perform



## MODEL EXI 3786PHM2 PHOTOELECTRIC SMOKE ALARM



**IMPORTANT: READ ALL INSTRUCTIONS BEFORE INSTALLATION.  
NO USER REPLACEABLE PARTS INSIDE**

### RECOMMENDED LOCATION OF ALARMS

- Locate the first smoke alarm in the immediate area of the bedrooms. Try to protect the exit path as the bedrooms are usually farthest from an exit. If more than one sleeping area exists, locate additional smoke alarms in each sleeping area.
- Locate additional smoke alarms to protect any stairway as stairways act like chimneys for smoke and heat.
- Locate at least one smoke alarm on every floor level.
- Locate a smoke alarm in any area where a smoker sleeps or where electrical appliances are operated in sleeping areas.
- Smoke, heat and other combustion products rise to the ceiling and spread horizontally. Mounting the smoke alarm in the ceiling in the centre of the room places it closest to all points in the room. Ceiling mounting is preferred in ordinary residential construction. However, in mobile homes, wall mounting on an inside partition is preferred to avoid the thermal barrier that may form at the ceiling.
- When mounting smoke alarms on the ceiling, locate it a minimum of 300mm from a sidewall and 300mm from any inside corner (see Diagram A).
- When mounting smoke alarms on a wall, use an inside wall with top edge of the smoke alarm a minimum of 300mm and a maximum of 500mm below the ceiling and at least 300mm from any corner (see Diagram A).

For further information on fire safety contact your local Fire Brigade

### FALSE ALARMS

The smoke alarm is designed to minimise false alarms. Smoking will not normally set off the alarm unless smoke is blown directly into the smoke alarm. Combustion particles from cooking may set off the alarm if the smoke alarm is located close to the kitchen cooking appliances.

If the smoke alarm does sound, check for fires first. If a fire is discovered, leave quickly and call the fire department. If no fire is present, check to see if one of the reasons listed above may have caused the alarm.

### INSTALLATION AND MOUNTING INFORMATION

**WARNING: THIS SMOKE ALARM MUST BE INSTALLED BY A QUALIFIED ELECTRICIAN IN ACCORDANCE WITH THE RELEVANT REQUIREMENTS OF AS 3000 - 2007**

The smoke alarm will function correctly either as a stand-alone alarm or inter-connected.

Up to 40 smoke alarms can be inter-connected.  
All inter-connected smoke alarms must be supplied from a single power circuit. Do not connect the Inter-connect wire to Live or Neutral Terminals.  
Connect and power the smoke alarm with 220-240VAC only.

### FOLLOW THE INSTALLATION STEPS

1. Turn off power at the main fuse box or circuit breaker by removing the fuse or switching the circuit breaker to the OFF position
2. Push the locking button, and open the mounting plate, then install 9V battery back-up. Battery back-up cannot work until you install the battery in the correct position (Match '+' to '+' and '-' to '-')
3. Push and hold test button until the alarm sounds: beep, beep, beep ... and the red LED flashes once every second.
4. Release buckle and Make sure that the connector of screws are loosen by standard flat head screwdriver on the mounting plate.
5. Connect Neutral wire to 'N' connector (Note: Mark 'N' on the back of mounting plate) to the neutral wire".
6. Connect Live wire from 'L' connector (Note: Mark 'L' on the back of mounting plate) to the hot wire".
7. If interconnection is desired, connect interconnect wire from 'I' connector (Note: Mark 'I' on the back of mounting plate) connector to interconnect wire between smoke alarms. See section interconnecting smoke alarms
8. Pull down the buckle, then secure plate to ceiling or wall with mounting screws and close the door of Smoke alarm

**NOTE: Smoke alarm will not mount to plate if battery is not installed.**  
Turn on power at main fuse box or circuit breaker.

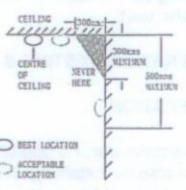
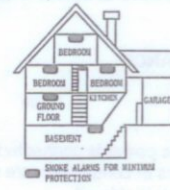
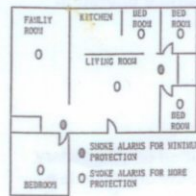
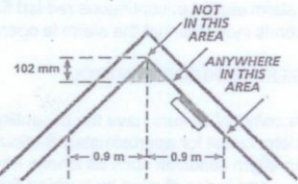


Diagram A



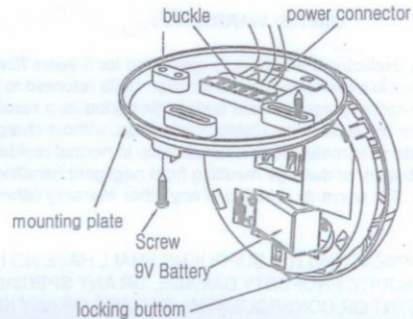
### AVOID THESE LOCATIONS

#### DO NOT LOCATE YOUR SMOKE ALARM IN:

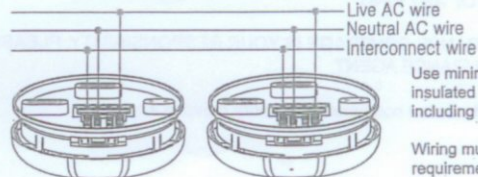
- The kitchen – smoke from cooking might cause an unwanted alarm.
- The garage – products of combustion are present when you start your motor vehicle.
- The front of forced air ducts used for heating and air conditioning.
- The peak of an "A" frame type of ceiling.
- Areas where temperatures may fall below 4°C or rise above 40°C.
- Areas of high humidity. Moisture can cause false alarms. i.e. bathrooms and laundries

### WHAT TO DO WHEN THE ALARM SOUNDS

- Leave immediately by your plan of escape. Every second counts, so don't waste time getting dressed or picking up valuables.
- In leaving, don't open any inside door without first feeling its surface. If it is hot, or if you see smoke seeping through cracks, don't open that door! Instead, use your alternate exit. If inside door is cool, place your shoulder against it, open it slightly and be ready to slam it shut if heat and smoke rush in.
- Stay close to the floor if the air is smoky. Breathe shallowly through a wet cloth, if possible.
- Once outside, go to your selected meeting place and make sure everyone is there.
- Call the fire department from your neighbour's home – not from yours.
- Don't return to your home until fire officials say that it is all right to do so.



Solid wires with 1mm<sup>2</sup> (or larger) cross-section area are recommended for power supply and inter-connection. Strip the Live, Neutral, and Inter-connect wires back to the length of 10mm. Connect the wires to the terminals and ensure the screws are fully tightened. Check the connections carefully before closing the terminal lid. Incorrect connection may damage the unit and invalidate the warranty.



Use minimum of 1mm<sup>2</sup> 250V insulated wire for all wiring including inter-connecting.  
Wiring must comply with relevant requirements of AS 3000 Wiring Rules

Your smoke alarm is designed for easy mounting on a wall or ceiling. To remove the alarm from the base, apply pressure to the locking pin in the direction stated. The unit will then hinge off the base. Position the alarm in accordance with these instructions and mark the position of the fixing holes. Drill these holes and mount using an appropriate fixing method.

Prior to closing the 9VDC battery must be connected. The alarm cannot be closed if the battery is not installed properly. To connect the battery, simply install the battery as indicated, paying attention to the correct polarity + positive – Neutral contacts. Press the test button to ensure the alarm is working correctly

Turn the power on. The green LED will now be visible. Press TEST button to check the alarms work. Inter-connected alarms must also be checked. **Do not leave installation until the alarms have been checked for correct operation.**

During power up, the unit may beep several times. This is a normal operation for the unit.

## OPERATION, TESTING & MAINTENANCE

### OPERATION

The smoke alarm is operating once the power is connected and turned on (the battery must also be installed). When products of combustion are sensed, the unit sounds a loud alarm, which continues until the air is cleared.

Please note; Green LED indicates that the unit has power and is operating. The Red LED indicates an alarm state; i.e. continuous red led flashing. A single red LED flash every 40 - 60 seconds indicates that the alarm is operating normally.

### FALSE ALARM "SILENCE/HUSH" CONTROL

Units with the "silence/hush" feature have the capability of temporarily reducing the sensitivity of the alarm circuit for approximately 8 minutes. This feature is to be used only when a known alarm condition such as smoke from cooking activates the smoke alarm. The smoke alarm is deactivated by pushing the "Silence/Hush" button on the smoke alarm once. The smoke alarm will automatically reduce sensitivity and light up the red indicator for approximately 8 minutes to indicate the alarm is in the temporary silent condition. It will reactivate after approximately 8 minutes and sound the alarm if particles of combustion are still present. The "silence/hush" feature may be used repeatedly until the smoke has cleared.

**CAUTION:** Before using the alarm "silence" feature, identify the source of smoke and be certain that safe conditions exist.

### TESTING

Test by pressing the test button on the smoke alarm cover for at least four seconds, until the alarm sounds. It activates the self-test program and the alarm sounds if all electronic circuitry, horn and battery are working. It is highly recommend you test the alarm weekly to assure proper operation. In case of no alarm sounds on test, and/or the unit has a defective battery, first replace the battery with a new one.

PLEASE DISPOSE OFF THE BAD OR DISCHARGED BATTERIES PROPERLY TO PROTECT OUR ENVIRONMENT.

## LIMITED WARRANTY

Your EXIT smoke alarm, excluding the battery, is warranted for 5 years from the date of purchase against defect in material and workmanship. Units returned to the place of purchase together with proof of purchase date during this period as a result of such defects will be repaired or replaced at the distributors' option, without charge. This Warranty only covers defects in materials or workmanship in normal residential use and does not cover the battery or damage resulting from negligent handling, misuse or lack of reasonable care. This warranty is in lieu of any other warranty either expressed or implied.

OMEGA POWER EQUIPMENT AND ITS SUPPLIERS SHALL HAVE NO LIABILITY FOR ANY PERSONAL INJURY, PROPERTY DAMAGE, OR ANY SPECIAL INCIDENTAL CONTINGENT OR CONSEQUENTIAL DAMAGE OF ANY KIND RESULTING FROM A FIRE. THE EXCLUSIVE REMEDY FOR BREACH OF THE LIMITED WARRANTY CONTAINED HEREIN IS THE REPAIR OR REPLACEMENT OF THE DEFECTIVE PRODUCT AT THE DISTRIBUTORS OPTION. IN NO CASE SHALL OMEGA POWER EQUIPMENT AND ITS SUPPLIER LIABILITY UNDER ANY OTHER REMEDY PRESCRIBED BY LAW EXCEED THE PURCHASE PRICE. YOUR SMOKE ALARM IS NOT A SUBSTITUTE FOR PROPERTY, DISABILITY, LIFE OR OTHER INSURANCE OF ANY KIND.

APPROPRIATE INSURANCE COVERAGE IS YOUR RESPONSIBILITY. PLEASE CONSULT YOUR INSURANCE AGENT.

This warranty does not affect a consumer's statutory rights in any way.



www.omegapower.com.au  
sales@omegapower.com.au

VIC NSW QLD  
(03) 9793 6111 (02) 9734 9944 (07) 3283 1199  
SA WA  
(08) 8340 9200 (08) 9475 0777



## MAINTENANCE

The smoke alarm is virtually maintenance free. However, under dusty conditions, a vacuum hose may be used to clear the dust through the side opening. It is recommended to clean the alarm monthly to keep best performance. Normally, the alarm can be operated up to 10 years without replacement.

## BATTERY REPLACEMENT

This smoke alarm utilises a 9VDC battery to provide back-up power to the alarm in case there are any disruptions to the 240VAC power. The smoke alarm has an audible low battery indicator. It will operate at 30-40 second intervals for a minimum of 7 days. Replace the battery when this indication occurs. It is recommended that the battery is replaced every 12 months.

The following batteries are acceptable as replacements: Duracell #MN1604, Eveready(Energizer)#522, Golden Power #G6F22. These batteries are available at many local retail stores.

## GOOD SAFETY HABITS

There are situations where a smoke alarm may not be effective in protecting against fire, for instance:

- \* Smoking in bed;
- \* Leaving children home alone; and
- \* Cleaning with flammable liquids, such as gasoline.

## ELECTRICAL RATING

MAINS POWER  
Operating voltage (Max.): 220-240VAC, 50Hz  
Operating current (Max.): 40mA

## BACKUP BATTERY

Operating voltage (Max.): 9VDC  
Operating current (Max.): 15uA (standby); 15mA (alarm)

Battery Type: 9VDC STANDARD BATTERY

## PROOF OF PURCHASE

- Please retain your purchase receipt for all service or warranty claims
- Complete details of your purchase in the section below for your own reference

Date of purchase \_\_\_\_\_

Type of Product / Model No. \_\_\_\_\_

Your Name \_\_\_\_\_

Your Address \_\_\_\_\_

Place of Purchase \_\_\_\_\_

For all warranty enquires on this product contact our Customer Service Centre.

## 240V AC Photoelectric Smoke Alarm Features

- 220 Vac - 240 Vac 50Hz, 40mA
- Photoelectric sensing chamber
- Modern design
- 9 V Battery back-up battery included
- Inter-connectable up to 40 alarms
- Alarm Indication: 85 dB at 3 m
- Low Battery audible indication
- Integrated Hush/Silence & Test button
- Green LED indicates "power on"
- Red LED, Alarm active flashes approximately every 45 seconds, quiescent condition.
- Red LED, Rapid flash indicates alarm condition.
- Alarm will not operate without back-up battery installed
- Operating temperature from 4° C to 40° C
- Relative humidity 10% to 90%
- Easy fit, surface mount base design.
- Complies with Australian Standard AS 3786 -1993
- Activfire listed
- Complies with Electrical Safety Standard AS/NZ 3100 -2002